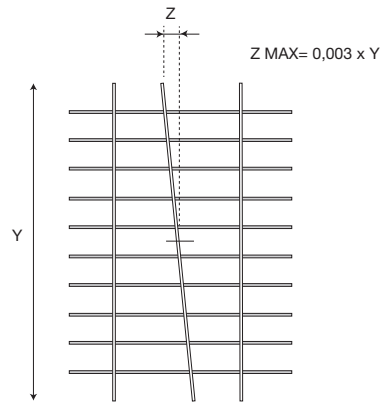
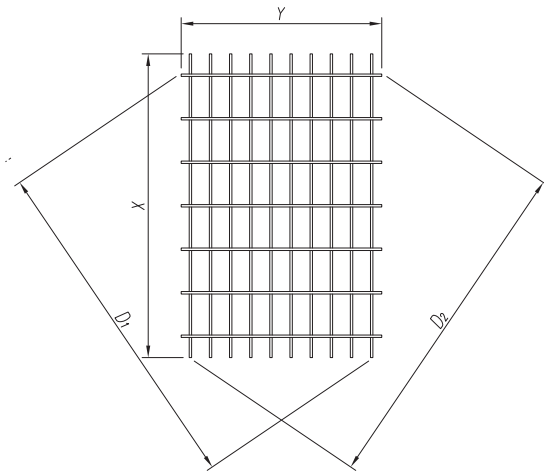


LE SEGUENTI TOLLERANZE SONO DA CONSIDERARSI COME STANDARD DI COSTRUZIONE  
 the following tolerances are to be considered standard



### Lunghezza pannello (X)

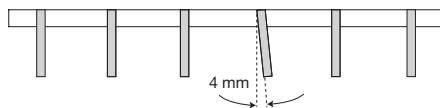
[x] tolleranza sulla lunghezza  
 per  $X \leq 2\,000$  mm  
 $x \text{ max.} = 0 \text{ mm}$   
 $-4$   
 per  $X > 2\,000$  mm  
 $x \text{ max.} = 0 \text{ mm}$   
 $-0,002 \times X$

### Lunghezza pannello (Y)

[y] tolleranza sulla larghezza  
 per  $Y \leq 1\,000$  mm  
 $y \text{ max.} = 0 \text{ mm}$   
 $-6$   
 per  $Y > 1\,000$  mm  
 $y \text{ max.} = 0 \text{ mm}$   
 $-0,006 \times Y$

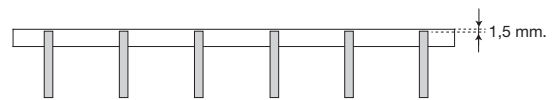
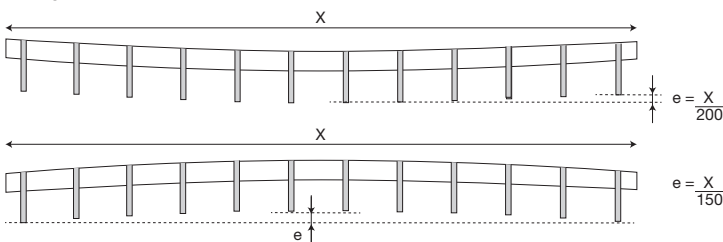
### Diagonali pannello ( $D_1, D_2$ )

[d] tolleranza sulle diagonali  
 per  $X \leq 2\,000$  mm  
 $d \text{ max.} = D_1 - D_2 = \pm 6 \text{ mm}$   
 per  $X > 2\,000$  mm  
 $d \text{ max.} = D_1 - D_2 = 0,003 \times X$



### Inclinazione del piatto portante

bearing bar inclination

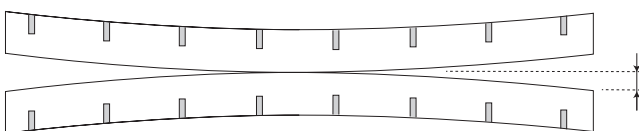


### Sporgenza traversini

transverse bar protrusion

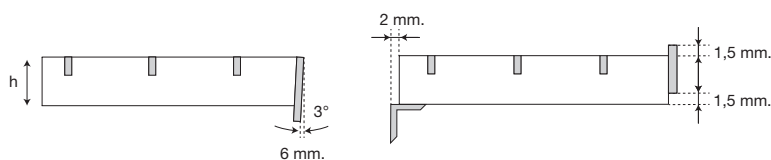
### Planarità longitudinale

longitudinal flatness



### Planarità longitudinale 1/200

longitudinal flatness 1/200

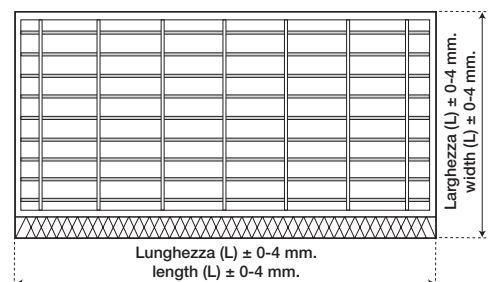


### Planarità longitudinale

longitudinal flatness

$i \text{ MAX} = 0,1 \times h$

$i \text{ MAX} =$  spessore piatto di bordo



### Tolleranza gradino - misure esterne

step tolerances - external dimension

